



# WILDTIERE AUF DEM BAUERNHOF: INSEKTEN

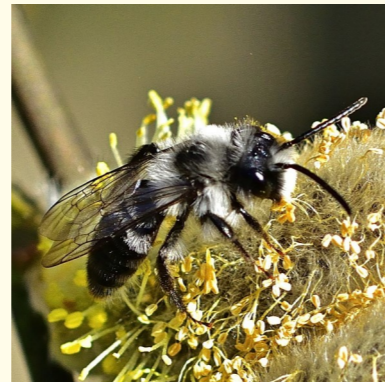
Lebensraum: Wiese, Acker, Streuobstwiese, Hecke, Feldrand, Waldrand, Hof, Stall



Honigbiene



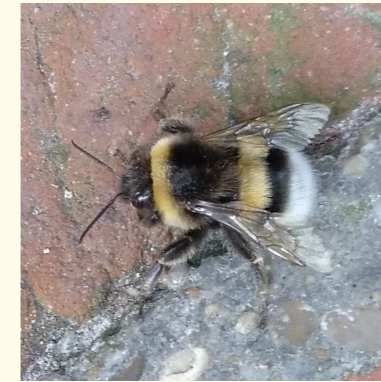
Blaue Holzbiene



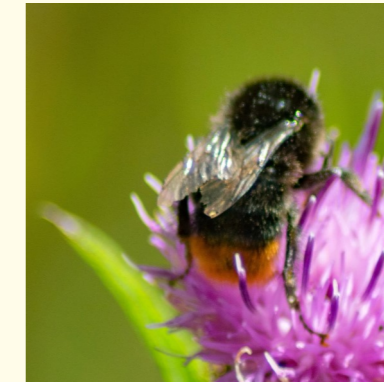
Sandbiene



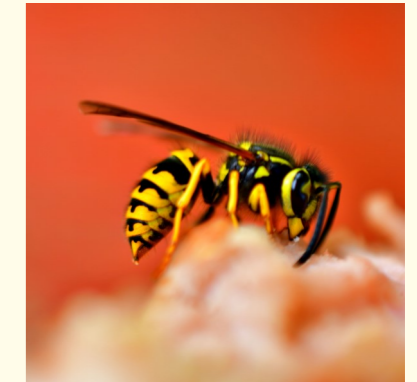
Ackerhummel



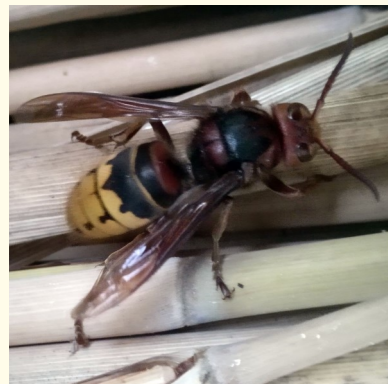
Erdhummel



Steinhummel



Wespe



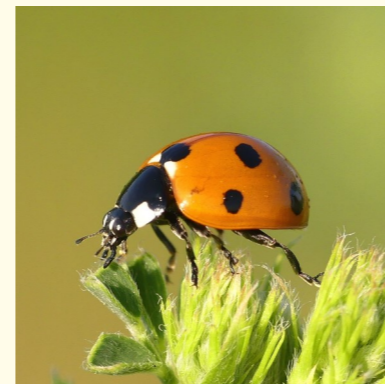
Hornisse



Mistkäfer



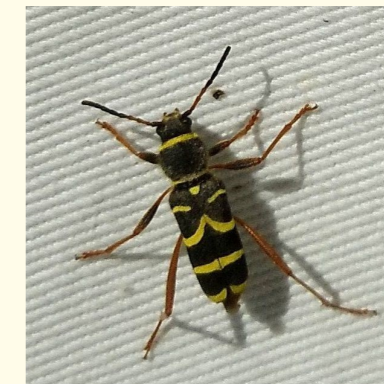
Maikäfer



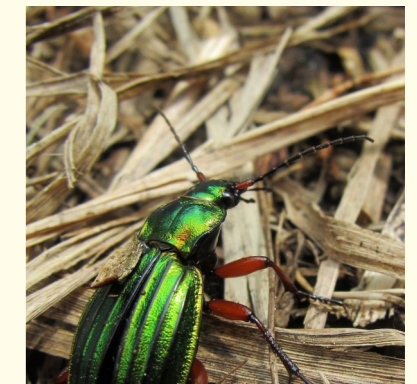
Marienkäfer



Bockkäfer



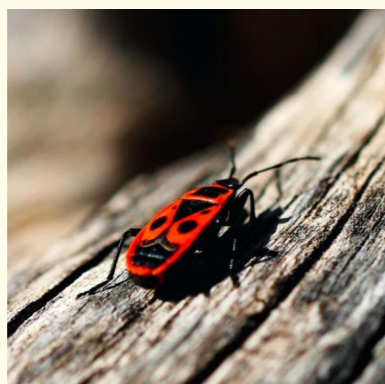
Widderbock



Goldlaufkäfer



Kartoffelkäfer



Feuerwanze



Gold-Rosenkäfer



Feuerkäfer



Stinkwanze



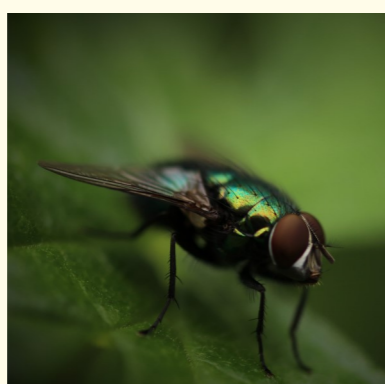
Libelle



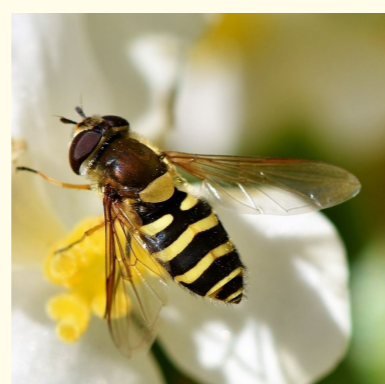
Blattlaus



Stubenfliege



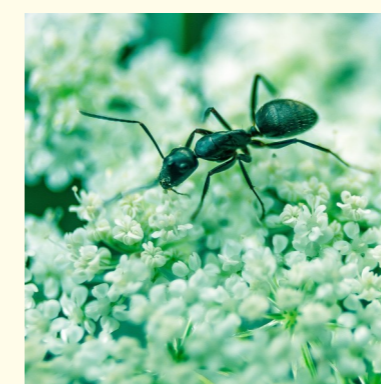
Schmeißfliege



Schwebfliege



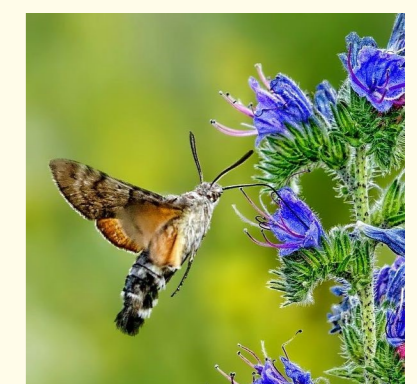
Heuschrecke



Ameise



Blutströpfchen



Taubenschwänzchen

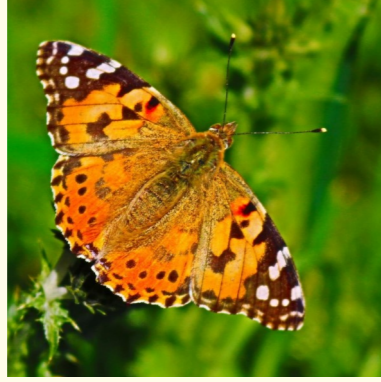


# SCHMETTERLINGE AUF DEM BAUERNHOF

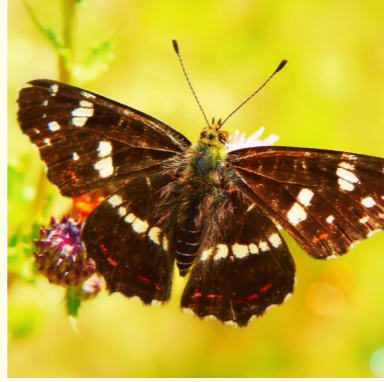
Lebensraum: Wiese, Acker, Streuobstwiese, Bauerngarten, Hecke, Feldrand, Waldrand



Tagpfauenauge



Distelfalter



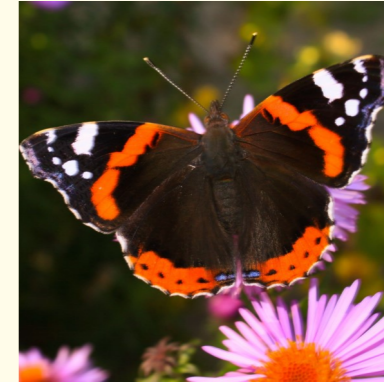
Landkärtchen



Kleiner Fuchs



Schwalbenschwanz



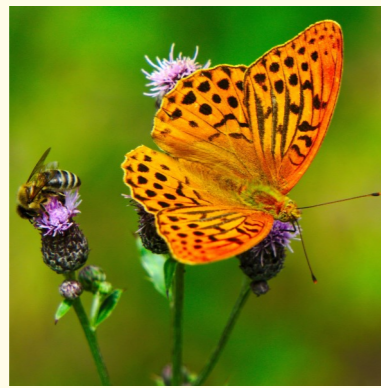
Admiral



Schachbrett



Kohlweißling



Kaisermantel



Großes Ochsenauge



Weißklee-Gelbling



Hauhechel-Bläuling



Aurorafalter



Zitronenfalter



***Brennnesseln sind Raupennahrung***



***Disteln sind Falternahrung***